

# SIMPLE WATER AUDIT FOR NON DOMESTIC PREMISES

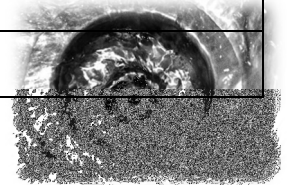


**Step 1** Consider the source of the water that you use

Water Sources	Water from mains	Private Borewell	Rain Water Harvesting	Greywater Recycling
% of total				

**Step 2** Consider where the water goes

Wastewater disposal	Discharge to sewer	Incorporated in manufactured goods / produce	Lost through in production process eg evaporation	Re-used or recycled
% of total				



**Step 3** Consider the amount of water used for different purposes

Reason for usage	Amount used per annum	% of total usage	Water Cost per annum	Sewage Cost per annum
<b>Sanitation</b> (toilets, urinals, washbasins, showers etc)				
<b>Kitchen / Canteen</b> (sinks, dishwashers, drinking fountains etc)				
<b>Laundry</b>				
<b>Premises Cleaning / Washing</b> (mopping floors etc)				
<b>Heating and Cooling</b> (supplies to boilers, air conditioning systems etc)				
<b>Manufacturing processes</b> (flushing through machinery, evaporation, embodied in product)				
<b>Outdoor use</b> (vehicle washing, yard washing, watering/irrigation)				
<b>Other Uses</b>				
<b>Unaccounted-for water</b>				
<b>TOTALS</b>				

**Step 4** Monitor your consumption by reading the meter, this can also indicate the presence of leaks.

**Step 5** Regularly inspect your pipework, fittings and appliances to identify any defects.

**Step 6** Consider opportunities to become more water efficient and develop an action plan.

**Step 7** Consider historic usages. Are you currently using more than before, is there a reason for this? If not this could indicate a leak.

**Step 8** Consider activities need for drinking water quality water. This may indicate where alternative sources could offer savings.



NB.NI Water suggests looking at BS 8542:2011: Calculating domestic water consumption in non-domestic buildings: code of practice it can be found at [www.bsigroup.co.uk/](http://www.bsigroup.co.uk/)

**BS 8542:2011** gives recommendations for calculating the volume of public mains water that is consumed for domestic use in non-domestic buildings. It applies to both new and existing buildings and covers:

- Water that is sourced from unwholesome sources i.e. rainwater harvesting systems or greywater reuse systems
- Water that is sourced from wholesome sources including both hot and cold water.

There are a wide range of building types that constitute non-household buildings including, but not limited to: offices; restaurants; retail buildings; industrial buildings; hotels; leisure buildings; education buildings.