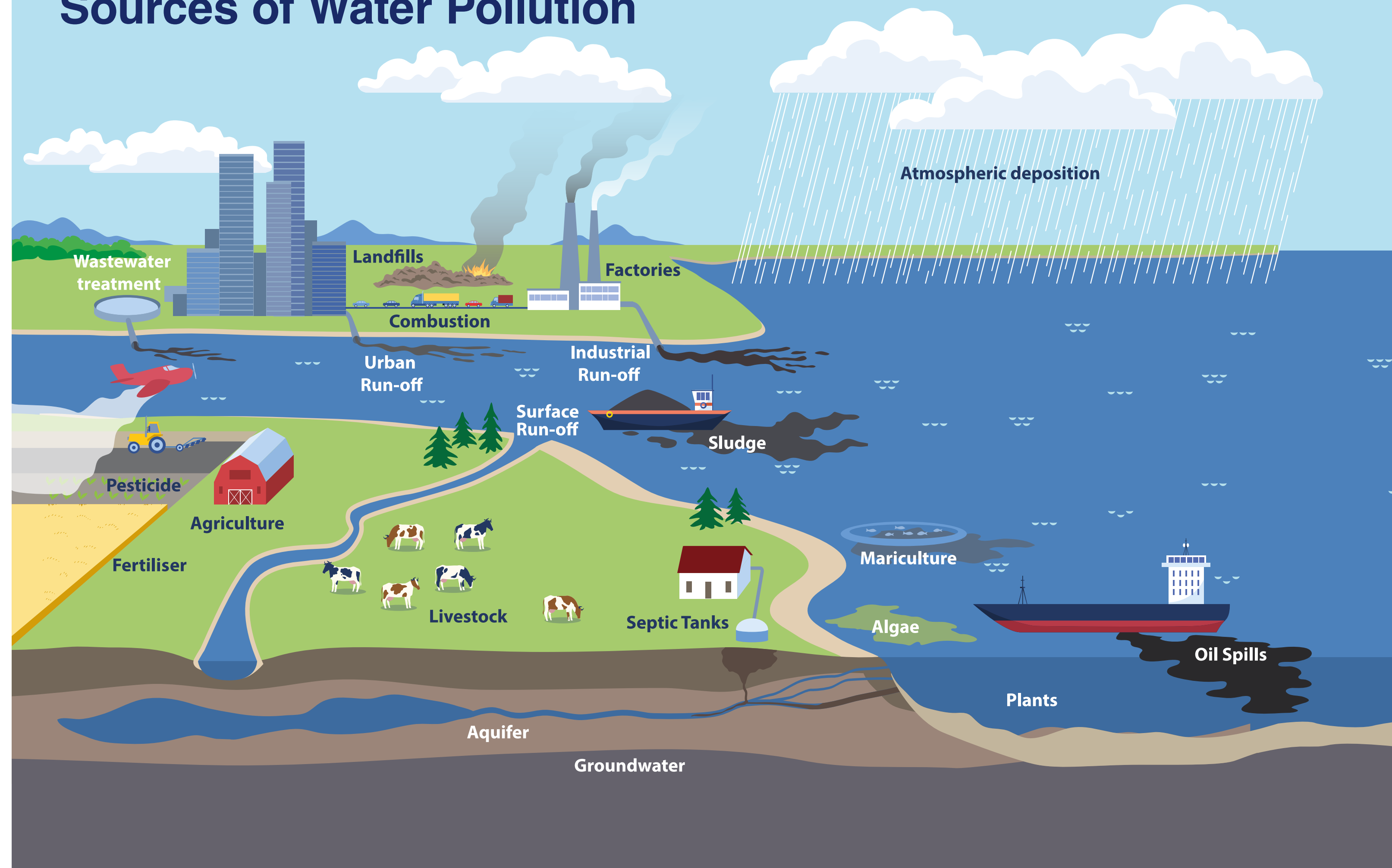


# YOU'RE THE SOLUTION TO WATER POLLUTION

## Sources of Water Pollution



# Water Pollution - what is it?

Water pollution occurs when harmful substances such as chemicals, excessive nutrients or microorganisms cause an impact on a waterbody such as a stream, river, lake, ocean or aquifer. These impacts can damage our ability to use or enjoy the waterbody as well as affect many of the plant and animal species that call them home.

# Water Pollution - What does it look like?

Here are some signs of water pollution to look out for:



- *Fungus and algae blooms indicate nutrient issues.*

# Water Pollution - where does it come from?

Water pollution can often arise from activities which we don't often think can have direct impacts on rivers and lakes.

This can include impacts to water quality (affecting use of water for recreational activities and treatment for drinking water) or wildlife (plants and animals suffer).

**Here is a quick summary of some potential pollution sources you might not be aware of:**

Pollution Source	What it can be
Urban (towns or cities)	<ul style="list-style-type: none"> <li>• Disposal of chemicals or paint down surface drains.</li> <li>• Properties not connected properly to the sewage network.</li> </ul>
Wastewater (Domestic & urban)	<ul style="list-style-type: none"> <li>• Poorly maintained septic tanks.</li> <li>• Flushing wipes down the toilet.</li> <li>• Washing fats down the sink.</li> </ul>
Agriculture	<ul style="list-style-type: none"> <li>• Slurry spread close to a waterbody or before a rainfall.</li> <li>• Pesticides spread close to a waterbody or before a rainfall.</li> <li>• Animals entering a waterbody, causing damage E.Coli.</li> </ul>
Industries	<ul style="list-style-type: none"> <li>• Inappropriate disposal of chemicals.</li> </ul>
Waste	<ul style="list-style-type: none"> <li>• Illegal dumping/ inappropriate disposal.</li> </ul>
Forestry	<ul style="list-style-type: none"> <li>• Release of sediments through felling close to a water body.</li> <li>• Drainage through forests transporting nutrients and sediments.</li> </ul>
Peat	<ul style="list-style-type: none"> <li>• Cutting/ Harvesting of peat.</li> </ul>
Invasive Species (Plants, Bug, Fish)	<ul style="list-style-type: none"> <li>• Damaging river banks.</li> <li>• Changing water quality to negatively impact native species.</li> </ul>

# You're the solution

There are a number of ways we all can help reduce water pollution and protect our local water environment.

Follow our **3 Step guide** on how to get involved.

## Step 1: See it - Report it

If you see water pollution in a river, lake or sea, contact the Water Pollution Hotline **0800 80 70 60** or [emergency-pollution@daera-ni.gov.uk](mailto:emergency-pollution@daera-ni.gov.uk)

This helps NIEA take appropriate action to stop the spread of water pollution and find the source.

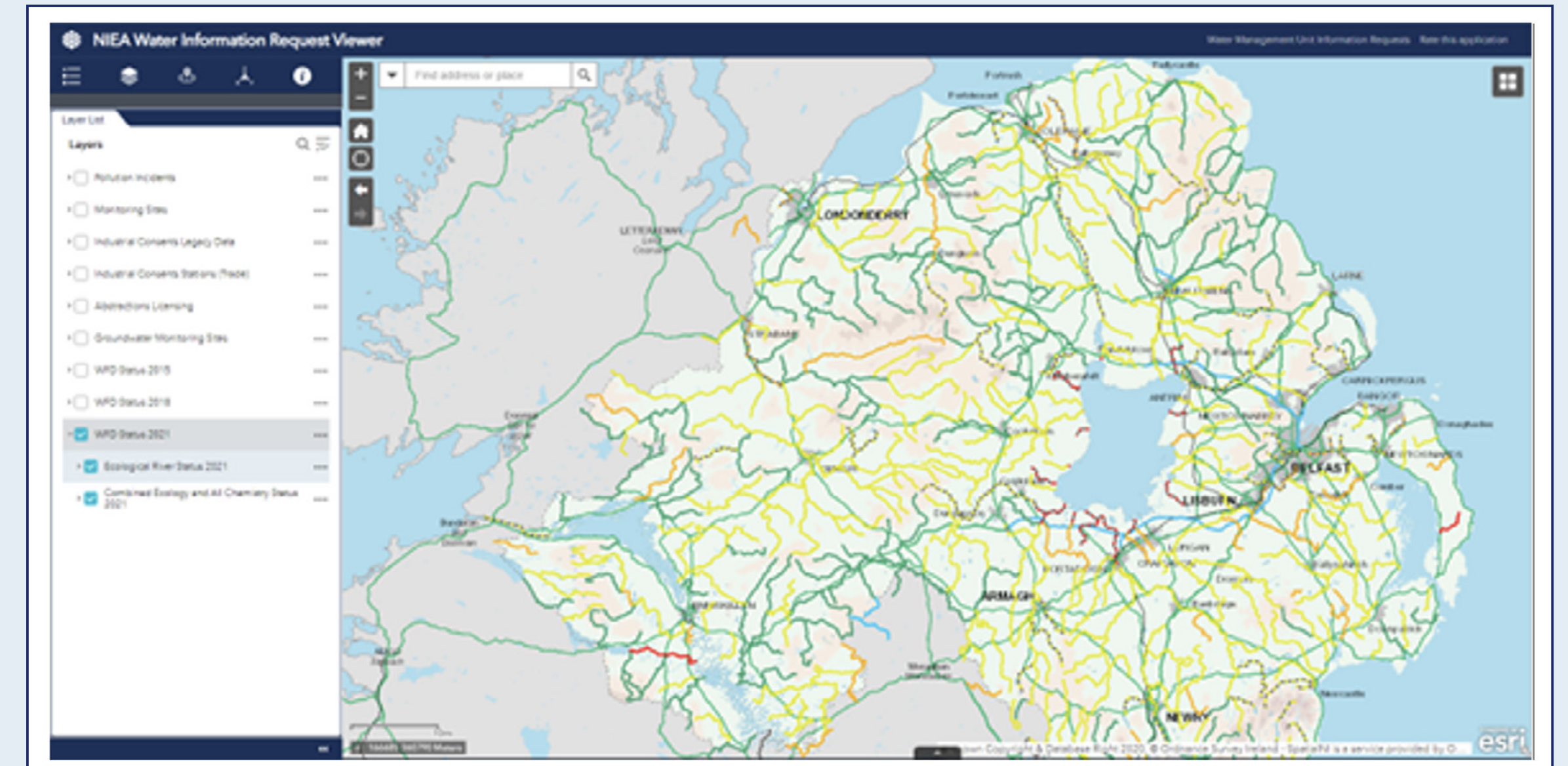


**Water Pollution Hotline**  
to report an incident of water pollution telephone  
**0800 807060**  
Freephone Number, 24hrs, 7 days a week. \*Mobiles are charged at standard network rates.

For more details visit: [www.daera-ni.gov.uk/articles/niea-and-water-pollution](http://www.daera-ni.gov.uk/articles/niea-and-water-pollution)

## Step 2: Get to know your local water environment

You can find and identify the names of rivers and waterbodies in your area via the handy NIEA Catchment Viewer.



- *The NIEA Catchment Viewer shows the water quality for all of Northern Ireland!*

Using the NIEA Catchment Viewer will help you to become better aware of the water quality in your area - the viewer can be accessed using the link below:

[WMU Digital Dataset Downloads](#)

If you would like more detailed information you can also contact NIEA:

[WaterInfo@daera-ni.gov.uk](mailto:WaterInfo@daera-ni.gov.uk)

## Step 3: Lend a helping hand

### Recording

Recording and reporting when out and about in your local water environment is a key way to help and can even be done through a range of free apps.

#### Examples of Free Apps

##### Bloomin Algae



Blue-green algae occurs naturally in freshwaters, however they can produce toxic chemicals that are harmful to people and animals, particularly in warm summer months when algal blooms can occur.

Download the Bloomin' Algae citizen science app, and send through suspected photos of algae in rivers or lakes and you could help to identify blue-green algae locations and consequently protect public health.



Bloomin' Algae app can be downloaded from Apple and Android app stores, and further information on the app can be found:

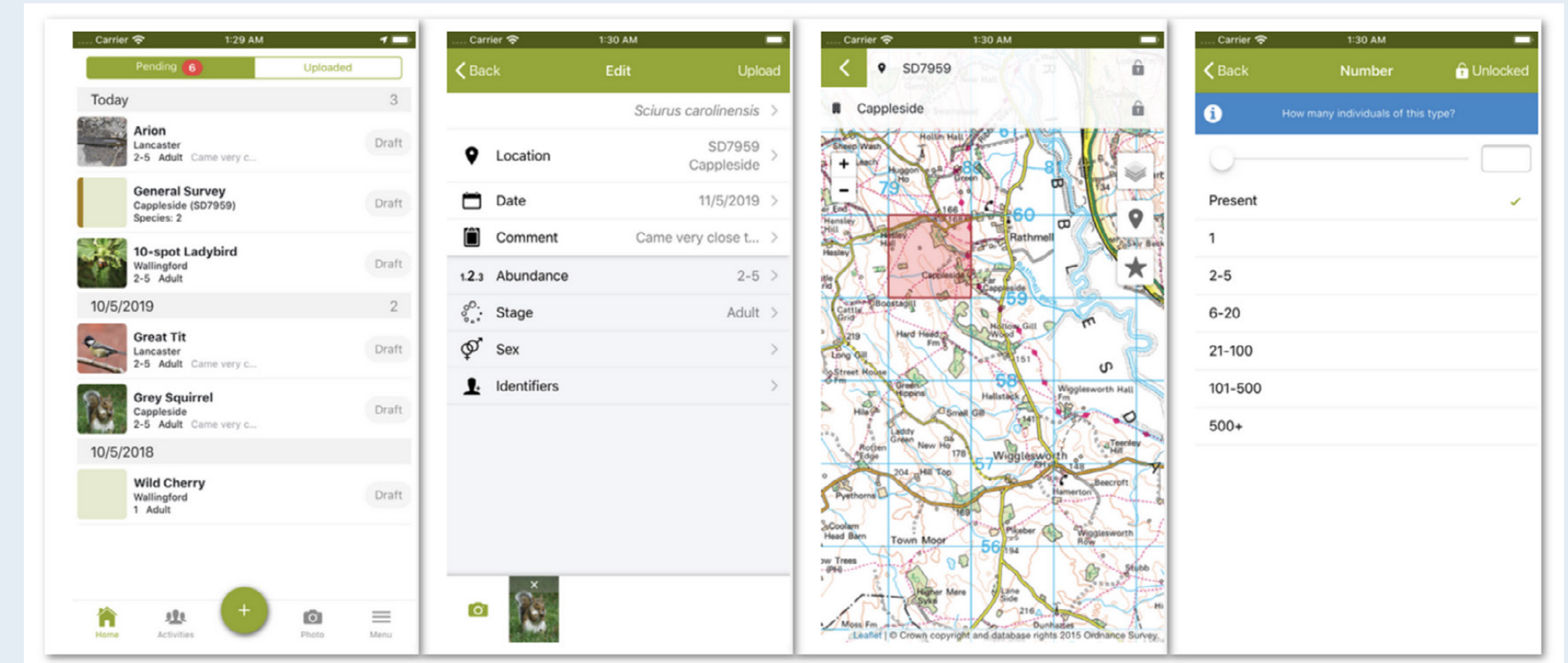
[www.ceh.ac.uk/our-science/projects/bloomin-algae](http://www.ceh.ac.uk/our-science/projects/bloomin-algae)

##### iRecord



Contribute to protecting your local environment by getting involved with recording of wildlife and plants. This app helps you to both identify and record locations of invasive alien species, helping identify conservation opportunities in your local area.

Download the iRecord citizen science app, and start logging locations of plants and wildlife you see.



iRecord app can be downloaded from Apple and Android app stores, and further information on the app can be found: <https://irecord.org.uk/app>

# Help with current projects

You can get involved in a project to help reduce water pollution. There are numerous projects ongoing throughout the country ran by numerous organisations such as NIEA, Councils, River Trusts and Angling Groups to name just a few.

Some campaigns promoted by NIEA include:

**Prevention pollution from drains & yellow fish campaign**

[www.daera-ni.gov.uk/publications/niea-proper-use-drains-leaflet](http://www.daera-ni.gov.uk/publications/niea-proper-use-drains-leaflet)

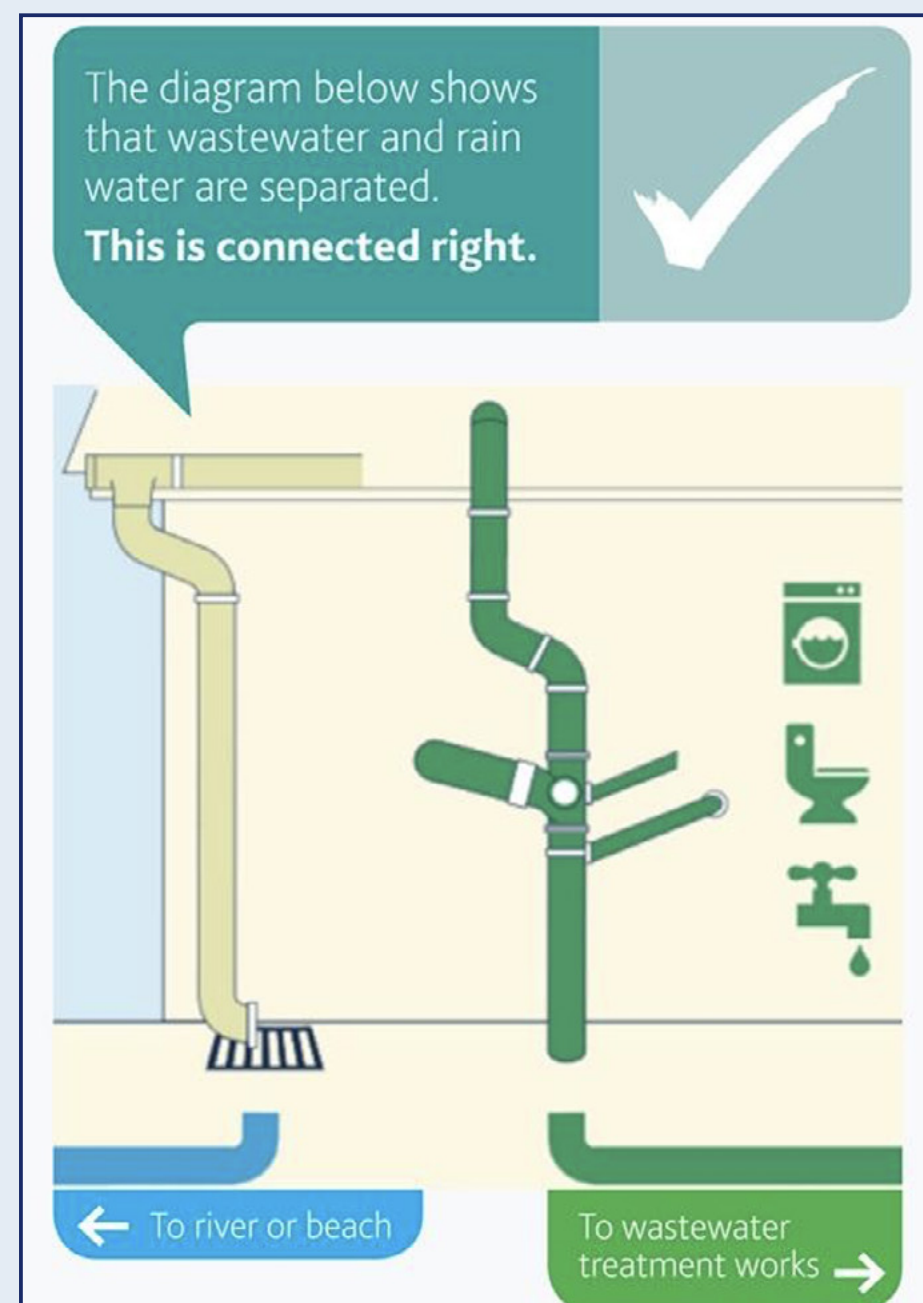
**Connecting your home to the right drains**

[www.nidirect.gov.uk/articles/connecting-your-home-right-drains](http://www.nidirect.gov.uk/articles/connecting-your-home-right-drains)



You can contact NIEA to find out more information and see if there are activities or groups active in the area addressing issues: [WaterInfo@daera-ni.gov.uk](mailto:WaterInfo@daera-ni.gov.uk)

Alternatively you can contact your Council or recreational groups that use the local waterways.



# Start your Own Project

If you feel the current campaigns do not address water pollution in your area, why not lead the way and start one of your own?

Every year, many people just like you start their own NIEA funded project through the Water Quality Improvement Grant. The scheme is ran annually to support local communities and voluntary organisations to invest in projects that help deliver improvements in the local waterways by helping people connect and appreciate their local water environment.

Click on this link to find out more: [www.daera-ni.gov.uk/articles/environment-fund-water-quality-improvement-strand](http://www.daera-ni.gov.uk/articles/environment-fund-water-quality-improvement-strand)



• *Training of Volunteers on River Monitoring.*



• *Instream Works.*



• *Bog Restoration.*

