

northern ireland
water



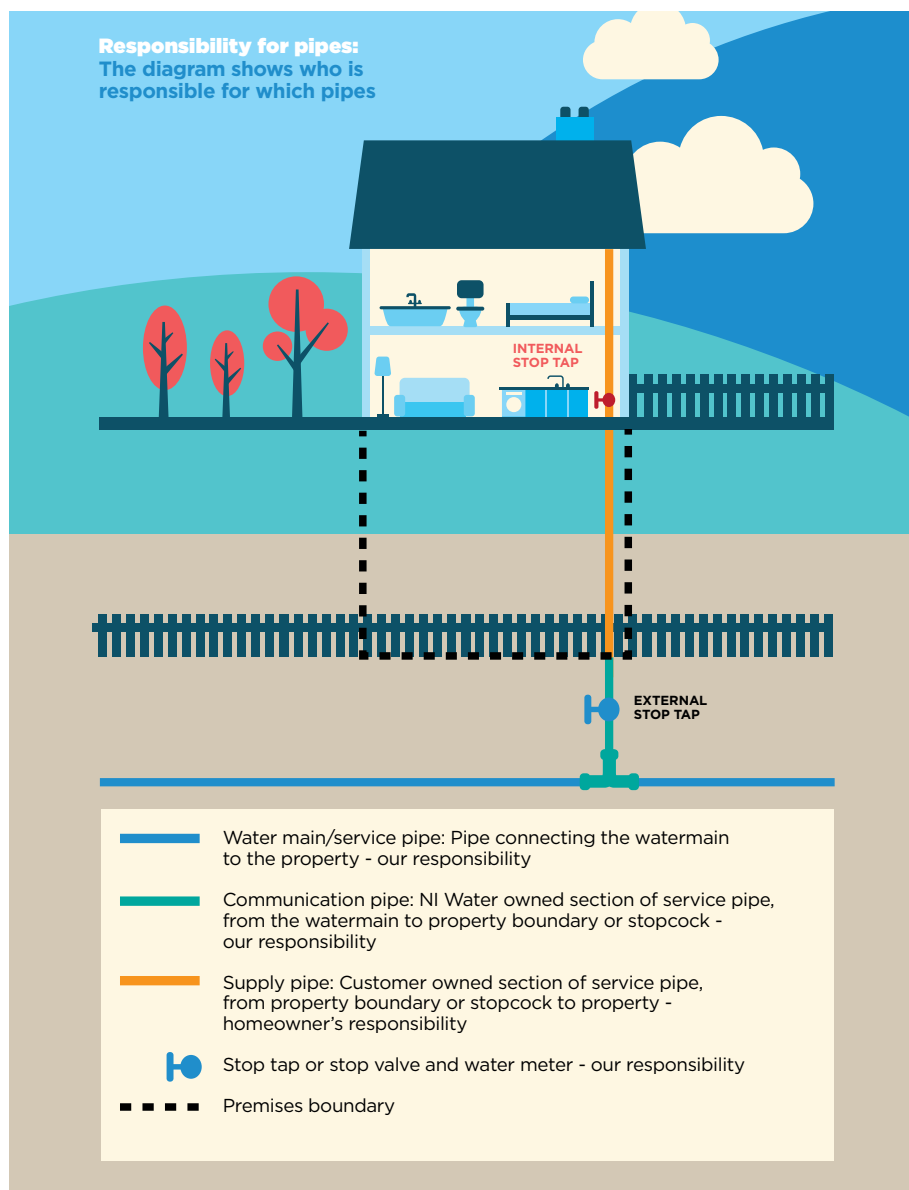
Delivering what matters

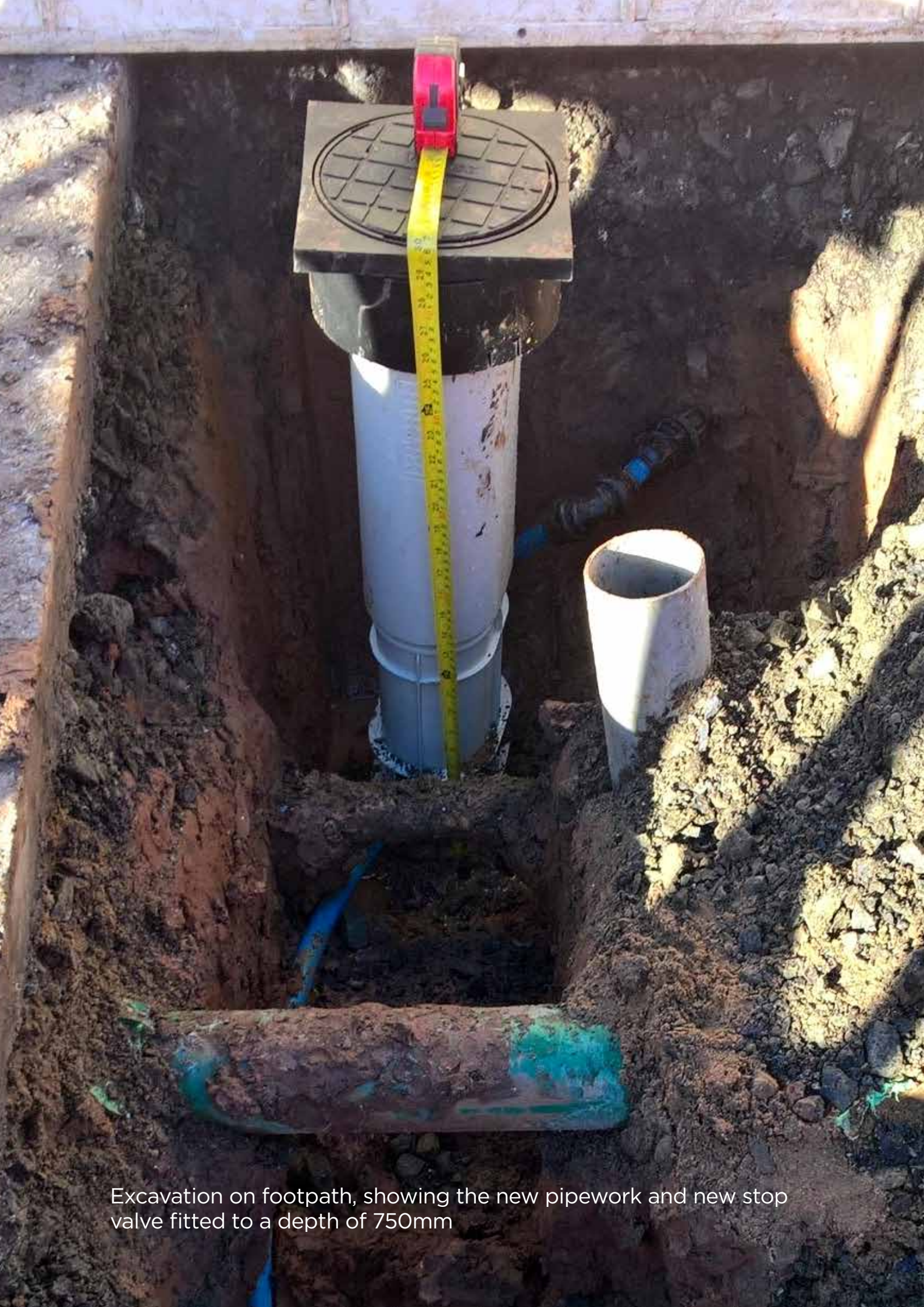
Guideline for Lead Pipe Replacement and Separation of Supply (LPR & SOS)

**FOR CUSTOMERS/CONTRACTORS
AND PLUMBERS**

Lead pipework in your property is likely to result in lead levels in your drinking water, which are above the limits set out in drinking water regulations, and may be harmful to health.

This is a guideline to help you if you are thinking of or in the process of completing an application for LPR or SOS.





Excavation on footpath, showing the new pipework and new stop valve fitted to a depth of 750mm

Lead Pipe Replacement

Please call us before you start work and we will make an appointment to call with you to give you advice on what is required from you when replacing your old lead pipe in your property.

Lead Samples

A lead sample can be taken first in your property to test for the lead content in the supply to your property. This can be arranged by giving us a call to set up an appointment at your property. We will inform you if it is over 10 micrograms per litre.

Properties

Properties built on and before 1970 may have a water supply made from Lead pipe. You may be able to check this by looking at your old pipe below your stopcock under your sink usually and by giving it a scrape it may appear to shine on the surface if it is lead.

Pipe Location

The pipe must be brought out in line with the old stopcock box on the footpath (in some cases carriageway or grass verge) as close as possible on a like-for-like basis.

Sometimes this is not possible because of large trees, roots and bushes. We will advise you on this.

It will be NI Water's decision if we decide to make your connection to another water main which is located closer to your property. For example: if you live in an end-of-terrace house with a carriageway or footpath that runs adjacent to the side of your property. We may make a connection onto that main and advise you where to seal off on the party pipe; we will then decide to disconnect the old supply if it is a single service pipe or to keep it live for any existing customers sharing the same pipework.

In some cases your supply may cross over the next door neighbours property to the stopcock on the footpath.

If you excavate a track and lay a pipe which is more than one metre from the old stopcock box before contacting us you may

be asked to move your pipe closer to the original stopcock box. This could result in the extra cost for you to dig another track in the correct location.

Contact us to give you advice before you start digging on the correct location to bring out your new pipe.

In some cases you may be on a shared supply with your neighbours to the left and or right of your property. A party pipe (Common Pipe) may exist which may run through inside your property towards your neighbours on either side and also through your front garden or outside area. This will also branch off to your property and serve other customers. This will also need to be replaced to the furthest point on both sides of your garden/outside area so that all possible lead pipe is removed completely from your property. This will be a benefit to you as you are still responsible for the old lead pipe that may supply water to either side of your house. If the old lead pipe wasn't replaced it could then leak; we could then serve an emergency notice to you to make the repair as it is still a live pipe in your property, even though you have a new supply laid to your house.

Contact us when you have the new pipe out to the building line/boundary of your property.

Seal off Old Pipes

Old unused pipes should be sealed off properly. For example: if you are at the end of a shared supply, it should be sealed off on the outside of the property as above and not left inside turned off at the old stopcock. This is important to stop future water quality issues due to the stagnant water left in the old pipework as mentioned above to prevent leaks.

Tracings

We may need access to your property to assist in the tracing of your water supply. We may have to connect onto your internal stopcock which is normally located under the kitchen sink area if you have no external outside tap.

Depth

The new pipework must be laid to a depth of 750mm and no more than 1,350mm from your property to the boundary line (garden wall/fence line/hedge line). The pipe should be laid in a bed of quarry dust or pee gravel. The pipework entering the building should be passed through a duct and sealed at both ends and insulated. We have to inspect this when the ground is open.



Undermine

When digging out the track for your new water supply, undermine your garden wall/fence line or hedge. This can be done from inside your own property. This means digging and undermining the foundations of your wall fence or hedge because this ground still belongs to the property owner. This is to assist our contractors who do all the excavating on the public footpath and carriageway.

Shared Supplies

Some customers will be on a shared supply with the properties to the left and or right of their property. We have to ascertain if you are and how many other properties share the same service pipe. We will complete an investigation to prove supplies on-site.

Master Stopcocks

We may replace a master service/shared supply if we think it will be a benefit to NI Water economically and future-proof customers to the left and or right hand side of your residence if they decide at a later date to update their water supply.

We may take a branch off the supply and connect a new box to their existing supply.

Site Survey

We will complete a final survey when you contact us to say that your new pipe is laid out to the building line/boundary.

We will trace the water main and check for other customers who may be shared on the same supply. We will mark up on the footpath and carriageway and advise you on where to seal off the old supply if shared.

We will finally draw a sketch with all details to hand over to our contractors/in-house team to complete the work.

Rehabilitation Work

In some locations, some rehabilitation work has already been completed over the last number of years and in some cases a connection is only required from the new pipe to the newly laid stopcock box. We will complete this connection for you because the connection has been renewed from the water main to the boundary already. In some cases, when rehabilitation work has been completed, the contractors will replace services like-for-like in a street for example and may have only replaced the shared supply. We will investigate and check how many other properties are on the same supply and decide if a new service pipe is required or we may take a branch off the supply and fit a new box for your property. We will advise you on this when we are on-site.



Department for Infrastructure

DfI Roads are responsible for the footways and carriageways in Northern Ireland.

DO NOT dig anywhere on the footpath or carriageway.



You may be fined which could lead to a court appearance and a conviction.

Excavating on the footpath/carriageway could cause an accident if someone was to trip or fall into an excavation made by you. Anyone working on the footpath or carriageway requires a licence and you need to be a registered contractor.

Contractors

Our contractors are all approved to carry out work on the public footpaths and roads and hold a street work license under the Street Works Order 1995.

Our contractors will complete a temporary reinstatement of the work done outside your property and this will be followed up with a final reinstatement which will involve the replacement of the same type of the original surface material back to its previous condition before work was carried out.

Other Utility Companies

We would advise you not to use any other utility company to lay your pipe into the same track along the side of their pipe as it may be laid in the wrong location and may not be deep enough for frost protection. We will advise you where to lay your pipe.

Oil Line to Your Property

Please do not lay your new pipework close to your oil/fuel line of your property. Always keep your water supply pipe well away in case of a possible leak, which could contaminate your drinking water.

Plumbers/Contractors

All internal plumbing work should be carried out by a qualified plumber.

WaterSafe is the national Register for Approved Contractors Schemes for plumbing businesses in the UK. You can find your nearest approved plumber using the NI Water Website or using this link- www.watersafe.org.uk

Electrical Safety

If your electricity is earthed to your water pipe, you will need to find another method to earth your electricity to ensure electrical safety in your property. Ask an approved electrical contractor before you complete the work.

Costs

We recommend that you get several estimates for internal and external work required on your property. Prices may vary due to the distance of your property to the building line/boundary and the type of surface in your property.

Time Period

The LPR/SOS process can take up to fifty-six days to complete the work when we have completed the final inspection.

Northern Ireland Water
PO Box 1026
Belfast
BT1 9DJ

Phone Waterline: 03457 440088
Text Relay Service: 03457 440088
Fax: 028 9016 8002
Email: waterline@niwater.com
Website: www.niwater.com

Lead Pipe Replacement/Separation of Supply Process.

- A lead sample can be taken first before you start the process to allow you to check the lead content in your supply.
- Make an application for LPR/SOS online by downloading an application or give us a call on our waterline number and we will post an application to you.
- On receiving your application, we will make a first call on-site to help you with the process and advise you on what you need to do.
- Customer to get quotes from plumbers/contractors for work inside their property.
- When the pipe is laid out to the boundary of your property call us back to make an inspection to check for pipe depth, location of pipe and that the hedge/wall/fence is undermined. We will check if any further work is required before we give approval of the work on-site. We will not proceed until all conditions have been completed.
- Final inspection of the work will be completed. We will then proceed when everything is in place. We will then trace the water main, mark up and check and prove other customers who may be on a shared supply. A sketch will be completed and approved. Following this it will be sent over to our contractors who will then schedule the work to be completed.
- Our contractors will complete the work on the scheduled date and complete a temporary reinstatement on the footpath or carriageway and come back at a later date to complete final reinstatements to footpath/grass areas/carriageway to the original state before work was started.

Application Form References

- Lead Pipe Replacement: **WC-A079-LPR**
- Separation of Supply: **WC-A079-SOS**

Separation of Supply

Separation of Supply

Please call us before you start work and we will make an appointment to call with you to give you advice on what is required from you when applying for a SOS.

Lead Samples

A lead sample can be taken first in your property to test for the lead content in the supply to your property. This can be arranged by giving us a call to set up an appointment at your property, we will then inform you if it is over 10 micrograms per litre.

Criteria

Criteria required when applying for a Separation of Supply:

- Two or more domestic properties, connected prior to 2007 and paying rates - free Separation of Supply.
- Non-domestic separation from a domestic or vice versa - charged connection.
- Non-domestic separation from a non-domestic - charged connection.
- All new properties built since 2007 - all charged connections.
- If you are on a shared lead supply with your neighbours.
- If you do not have your own stopcock box to operate your own water supply on the public footpath/grass verge/carriageway.
- If you are experiencing a loss of pressure or flow at different times of the day and are on a shared supply with your neighbours, we will complete an investigation and take pressure and flow tests from your property, internally and externally. We may also carry out other checks in the area and fit a logger so we can record pressures and flows over a period of time.
- If you or your neighbours have installed a pressurised heating system, a Combi Boiler for example, which uses mains water for the appliance and you are on a shared supply with your neighbour and may be experiencing flow issues we will investigate and take tests on your supply.
- If your shared supply enters the property next to you and it has an internal stop valve in their property controlling both supplies.

Pipe Location

The pipe must come out in line with the old shared stopcock box on the footpath (in some cases carriageway/grass verge) as close as possible on a like-for-like basis.

Sometimes this is not possible because of large trees and roots, bushes etc. We will advise you on this.

It will be NI Water's decision if we decide to make your connection to another water main which is located closer to your property. For example: if you live in an end-of-terrace house with a carriageway or footpath that runs adjacent to the side of your property. We may make a connection onto that main and advise you where to seal off on the party pipe; we will then decide to disconnect the old service pipe at the main or keep it live for any existing customers sharing the same pipework.

In some cases your supply may cross over the next door neighbours property to the stopcock on the footpath.

If you excavate a track and lay a pipe which is more than one metre from the old stopcock box before contacting us you may be asked to move your pipe closer to the original stopcock box which could result in the extra cost for you to dig another track in the correct location.

Contact us to give you advice before you start digging on the correct location to bring out your new pipe.

In some cases you may be on a shared supply with your neighbours to the left and or right of your property. A party pipe (Common Pipe) may exist which may run through inside your property towards your neighbours on either side and also through your front garden or outside area. This will also branch off to your property and serve other customers. This will also need to be replaced to the furthest point on both sides of your garden/outside area so that all possible lead pipe is removed completely from your property. This will be a benefit to you as you are still responsible for the old lead pipe that may supply water to either side of your house. If the old lead pipe wasn't replaced it could leak, we could then serve an emergency notice to you to make the repair as it is still a live pipe in your property even though you have a new service laid to your house.

Contact us when you have the new pipe out to the building line/boundary of your property.



LPR/SOS in progress

Seal off Old Pipes

Old unused pipes should be sealed off properly. For example: if you are at the end of a shared supply, it should be sealed off on the outside of the property as explained and not left inside turned off at the old stopcock. This is important to stop future water quality issues due to the stagnant water left in the old pipework as previously mentioned and to prevent leaks.

Tracings

We may need access to your property to assist in the tracing of your water supply. We may have to connect onto your internal stopcock which is normally located under the kitchen sink area if you have no external outside tap.

Depth

The new pipework must be laid to a depth of 750mm and no more than 1,350mm from your property to the boundary line (garden wall/fence line/hedge line).



The pipe should be laid in a bed of quarry dust or pee gravel. The pipework entering the building should be passed through a duct and sealed at both ends and insulated. We have to inspect this when the ground is open.

Undermine

When digging out the track for your new water supply, undermine your garden wall/fence line or hedge. This can be done from inside your own property. This means excavating and undermining the foundations

of your wall fence or hedge because this ground still belongs to the property owner. This is to assist our contractors who do all the digging on the public footpath and carriageway.

Shared Supplies

Some customers will be on a shared supply with the properties to the left and or right of their property. We have to ascertain if you are on a shared supply and how many other properties share the same service pipe. We will complete an investigation to prove supplies on-site.

Master Stopcocks

We may replace a master service/shared supply if we think it will be a benefit to NI Water economically and future-proof customers to the left and or right hand side of your residence if they decide at a later date to update their water supply.

We may take a branch off the supply and connect a new box to their existing supply.

Site Survey

We will complete a final survey when you contact us to say that your new pipe is laid out to the building line/boundary.

We will trace the water main and check for other customers who may be shared on the same supply. We will mark up on the footpath and carriageway and advise you on where to seal off the old supply. We will finally draw a sketch with all details to hand over to our contractors/in-house team to complete the work.

Rehabilitation Work

In some locations, some rehabilitation work has already been completed over the last number of years and in some cases a connection is only required from the new pipe to the already newly laid stopcock box. We will complete this connection for you because the connection has been renewed from the water main to the boundary already. In some cases, when rehabilitation work has been completed the contractors will replace services like-for-like, in a street for example, and may have only replaced the

shared supply. We will investigate and check how many other properties are on the same supply and decide if a new service pipe is required or we may take a branch off the supply and fit a new box for your property. We will advise you on this when we are on-site.

Department for Infrastructure

DfI Roads are responsible for the footways and carriageways in Northern Ireland.

DO NOT dig anywhere on the footpath or carriageway.

You may be fined which could lead to a court appearance and a conviction.

Excavating on the footpath/carriageway could cause an accident if someone was to trip or fall into an excavation made by you. Anyone working on the footpath or carriageway requires a licence and you need to be a registered contractor.

Contractors

Our contractors are all approved to carry out work on the public footpaths and roads and hold a street work license under the Street Works Order 1995.



Our contractors will complete a temporary reinstatement of the work done outside your property and this will be followed up with a final reinstatement. This will involve the replacement of the same type of the original surface material back to its previous condition before work was carried out.

Other Utility Companies

We would advise you not to use any other utility company to lay your pipe into the same track along the side of their pipe as it may be laid in the wrong location and or may not be deep enough for frost protection. We will advise you where to lay your pipe.

Oil Line to Your Property

Please do not lay your new pipework close to your oil/fuel line of your property. Always keep your water supply pipe well away in case of a possible leak, which could contaminate your drinking water.

Plumbers/Contractors

All internal plumbing work should be carried out by a qualified plumber.

WaterSafe is the national Register for Approved Contractors Schemes for plumbing businesses in the UK. You can find your nearest approved plumber using the NI Water Website or using this link- www.watersafe.org.uk

Electrical Safety

If your electricity is earthed to your water pipe, you will need to find another method to earth your electricity to ensure electrical safety in your property. Ask an approved electrical contractor before you complete the work.

Costs

We recommend that you get several estimates for internal and external work required on your property. Prices may vary due to the distance of your property to the building line/boundary and the type of surface in your property.

Time Period

The LPR/SOS process can take up to fifty-six days to complete the work when we have completed the final inspection.

Northern Ireland Water
PO Box 1026
Belfast
BT1 9DJ

Phone Waterline: 03457 440088
Text Relay Service: 03457 440088
Fax: 028 9016 8002
Email: waterline@niwater.com
Website: www.niwater.com