

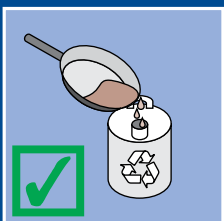
# Stop and think

## Not down the sink

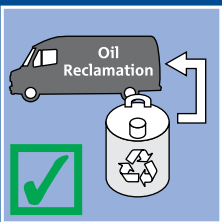
### DOs



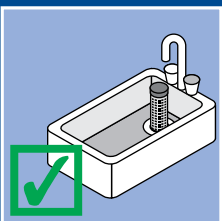
Wipe & scrape plates, pans and utensils before washing.



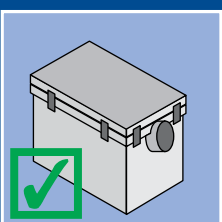
Collect waste oil in a suitable container.



Arrange for collection by licensed waste contractor.



Use strainers in sink plug holes.



Maintain grease traps & enzyme dosing equipment.

### DON'T



Don't put oil, fat or grease down the sink.



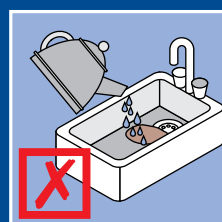
Don't pour oil, fat or grease down the drain.



Don't scrape food into the sink.



Don't sweep waste into floor drains.



Don't use boiling water to dissolve fat and grease.