

Using Water Wisely Water Audit for Schools



Northern Ireland Water provides clean drinking water. It takes away and cleans sewage from our schools in Northern Ireland.

This leaflet tells you how to find out how much water is used by your school and how it can be reduced.

School Survey - Water used at school

Find out the answers to the following

1. Read the meter as school finishes in the evening

2. Read the meter as school starts the next morning

Find the difference

How much water was used overnight?

If there is a large difference there may be a leaking pipe.

1. Ask the head cook to help you

Does the kitchen use the dishwasher fully loaded? Yes No

How many times a day is the dishwasher used?

Are vegetables and salads washed under a running tap? Yes No



Do they use the dirty water outside on the plants in the schools garden?

Yes

No

How many water jugs do they fill for lunches daily?

How much water is used during the day?

2. Ask your school caretaker to help you

Are your water pipes properly protected against freezing?

Yes No

How often do the urinals flush?

Do the urinals flush when the school is closed?

overnight

Yes No

during holidays

Yes No

Are water-efficient taps fitted?

Yes No

Are there dripping taps?

in the cloakrooms

Yes No

in the kitchen

Yes No

in the classrooms/laboratories

Yes No



Where to find your water meter

Do this with your teacher.

1. Take a piece of paper and a pencil with you

2. The meter is usually located either close to the edge of your school or in the footpath just outside it

3. You will find a metal plate with the word "WATER" written on it



4. The meter will be sitting inside a chamber and is joined to your water supply pipe at the bottom

5. Lift the outer lid, you may need to use a wide screwdriver. Inside it should be dry but sometimes rain may have collected in it. If you do find water and the weather has been dry and your school uses a lot of water, this may be the sign of a leak



6. Take out the polystyrene frost cover (not in all meters) to see the meter face

Each water meter has its own special serial number, which matches the one shown on your school water bill

Make sure you have found the right meter

Reading the meter

1. Look at the meter face (it's about the size of a tin of beans)

2. Read the black numbers on white which measure cubic metres.

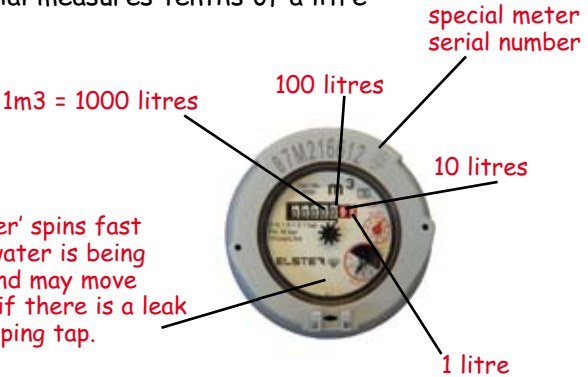
These are the numbers used on the school bill



3. Write these numbers down

4. The red dials on the right of the meter will move quickly when water is being used. There are usually three or four red dials

This dial measures tenths of a litre



How much water does your school use?

Don't forget read the meter at the same time each week.

1st reading _____

2nd reading _____

From the total water used in your school, do you know that....

- Approximately 60% is used to flush the toilets and urinals.
- Approximately 30% is used for washing.
- Approximately 10% is used by the canteen.

Leaking taps



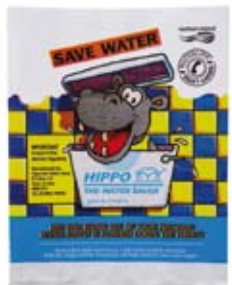
One drip per second wastes
4 litres per day



3mm stream of water wastes
985 litres of water per day

Older toilets: use 9 litres

Hippo Bags: save 3 litres



What do you know now about water use at your school?

Ask your Teacher to help you

What is the total number of pupils + staff at your school ?

The water used in your school will depend upon the number of people in your school each day, how often machines using water are used and how old they are.

To help you understand how much water you use, just complete this easy-to-follow checklist to estimate your average daily use.

	Average number of litres per use A	Count the number of uses B	Daily litres (AxB)
Toilet flushing	9		
Washing hands running tap	10		
Cooking and food preparation	15		
Dishwasher (per load)	22		
Washing up in the sink (each wash)	10		
Dripping tap (per day)	22		
Hose used in the garden(15mins)	135		
Estimate of "other" use eg drinking	4.5		

Total daily litres **+**

Now divide total daily litres by number of people at school

Average daily use

Do you know that...

- Each person in Northern Ireland uses approximately 145 litres of clean, treated water every day
- Each flush of a toilet will use approximately 9 litres of water in older toilets and 6 litres of water in the new style toilets. Only flush a toilet when it is used
- A running tap can use approximately 6 litres of water a minute
- A dripping tap can waste up to 30 litres of water a day. Report and repair leaking taps immediately
- Leaking hot water taps waste energy as well as water
- A domestic dishwasher uses between 10 and 20 litres of water for each wash. So make sure it is a full load
- A hose pipe gives out 135 litres of water in 15 mins. Use a watering can to water plants in the school garden
- Rain water can be collected in a waterbutt and the water used to water plants or wash the school windows

Northern Ireland Water
PO Box 1026, Belfast BT1 9DJ

email: waterline@niwater.com
www.niwater.com
Waterline 08457 440088

