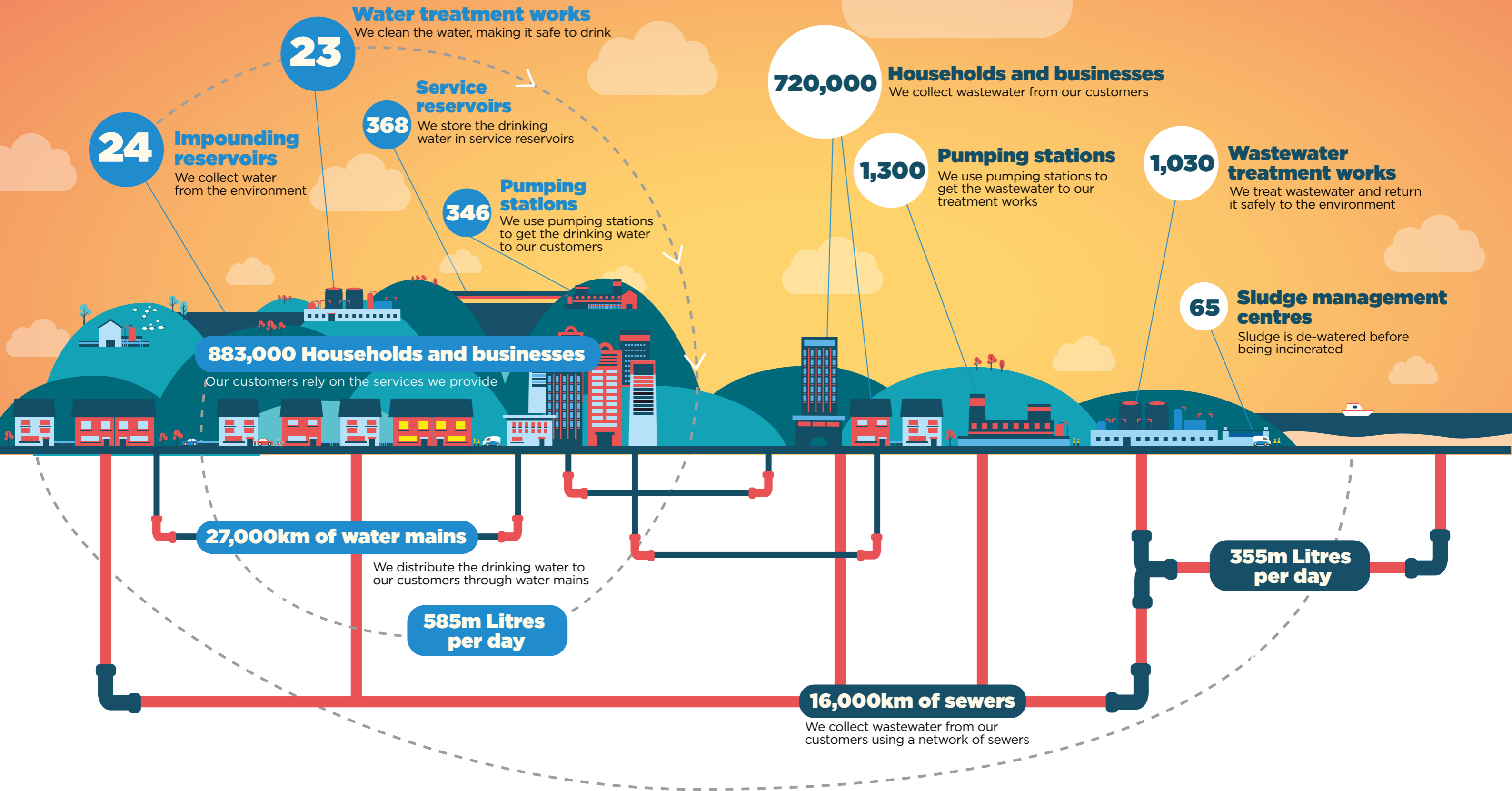


About NI Water

It costs around £460m each year to deliver water services in Northern Ireland. Thousands of assets at a value of around £3bn, are operated and maintained to provide these services. This includes over

40,000km of water mains and sewers - one and a half times longer than Northern Ireland's entire road network and long enough to circle planet earth.



23

Water treatment works
We clean the water, making it safe to drink

24

Impounding reservoirs
We collect water from the environment

368

Service reservoirs
We store the drinking water in service reservoirs

346

Pumping stations
We use pumping stations to get the drinking water to our customers

720,000

Households and businesses
We collect wastewater from our customers

1,300

Pumping stations
We use pumping stations to get the wastewater to our treatment works

1,030

Wastewater treatment works
We treat wastewater and return it safely to the environment

65

Sludge management centres
Sludge is de-watered before being incinerated

883,000 Households and businesses
Our customers rely on the services we provide

27,000km of water mains

We distribute the drinking water to our customers through water mains

585m Litres per day

16,000km of sewers

We collect wastewater from our customers using a network of sewers

355m Litres per day